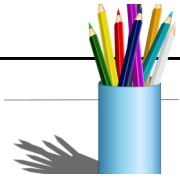




# Year 5 News



Welcome back! We hope you have had a lovely Easter break. We have a very busy half term and lots to fit in in before our next break!

## Maths

During this half term, our focus, for the first week, will be on fractions. After that, we shall then be moving onto decimals and percentages.

Please can you support your child to learn the times tables off by heart. As always, we encourage the children to spend time at home, if possible, to use Times Table Rock Stars and Numbots.

## PE

PE will be every Monday and Tuesday this half term for both classes. On Mondays, both classes will be learning about cricket. On Tuesdays, we will be learning skills in the sport of tennis. Both of these lessons will be taking place outside so indoor kits will not be necessary. Please ensure that your child always wears appropriate P.E. kit on their P.E. days which are in school colours. Please remember that no earrings or any jewellery are allowed during PE lessons. Also a reminder to tie long hair back.

## Summer 1 2026



## English

To begin with, our daily Literacy lessons will be closely linked to our Geography topic, which is all about the Rainforest and will focus on writing a non-chronological report about an endangered animal and focusing on its life cycle linked to our science topic. We will then finish the half term by writing poetry.

## Science

Our Science topic will be 'What do we know about the life cycles of human and various animals?' The children will be learning about how animals and plants reproduce, their life cycles and food chains.

## Homework

Please could you continue to read daily with your child, support them to learn times tables fluently by accessing Timetable Rock Stars as well as Reading Plus and Spelling Shed.

Our optional creative Nando's homework will continue this half term focusing on our topics, well-being, creativity and practical-based skills. Any completed NANDOs homework to be uploaded to SeeSaw or brought in thank you.

## Geography

Our Challenge Curriculum topic this half term is 'What creates a rainforest and why are they located where they are?' The children will begin their learning journey by learning about the location of major rainforests and their features, how humans are positively and negatively affecting rainforests and which creatures are endangered if we do nothing to protect the rainforests.

## Mini-Police

We will be continuing our mini-police programme this term. We will be learning and covering important areas such as: Crime, Crime Scene Investigators, Pedestrian safety and Pedestrian Op.

## Dates for your diary

School Closed (Bank Holiday) - 4th May

May Ball (School Disco after school)—21st May

Last Day of Summer 1—22nd May

INSET Day— 1st June

Phew, what a busy half term!

Mr Welbourne and Mr Constantinou

